

# 88 5134 611 Buffet

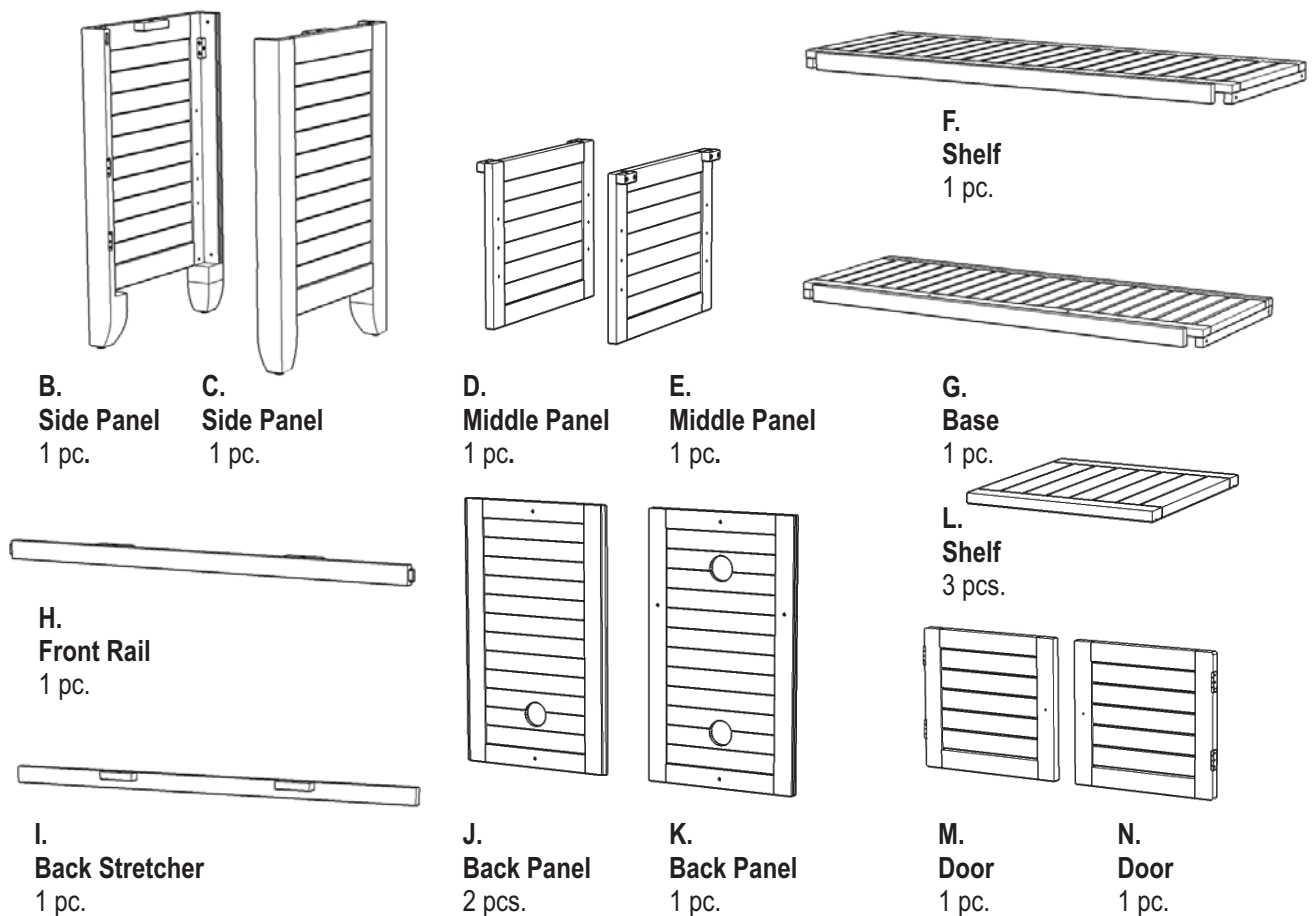
## IMPORTANT NOTE

Carefully remove all the parts from the carton and put them individually on a soft cloth to prevent scratches or other damages occurring to the wood parts.

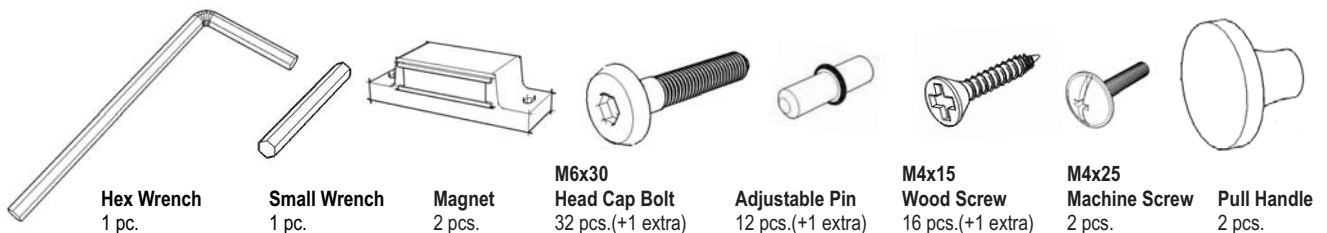
We have taken great care in the design of this product and request that you carefully and strictly follow our assembly instructions to ensure a completed product as it was designed.



## Part List



## Hardware List



**Also need the parts in carton 88 5134 612**

**Tools required for assembly :** Phillips screwdriver, Drill, 3/8" Drill Bit, Level

**Home Styles Consumer Assistance:** [www.homestyles-furniture.com](http://www.homestyles-furniture.com),  
[servicedesk@homestyles-furniture.com](mailto:servicedesk@homestyles-furniture.com), 888-680-7460, 877-831-0319

## IMPORTANT

*\*Please keep Hex Wrench in a safe place as you may need to tighten up the Head Cap Bolts in the future.*

*\*Do not tighten up all the screws until each part is properly assembled.*

*\*After assembly item must be level to work properly. Use the included adjustable levelers to level.*

*\*Use a soft cloth between these parts and the floor.*

## STEP 1

Attach Magnets to Shelf (F) with Wood Screws.  
(See Figure 1)

Attach Middle Panels (D) and (E) to Shelf (E) with Head Cap Bolts, tightening the bolts only half way.

Attach Base (G) to unit with Head Cap Bolts, tightening the bolts only half way.  
(See Figure 2)

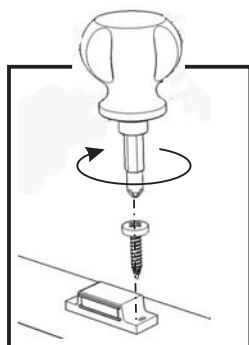


Figure 1

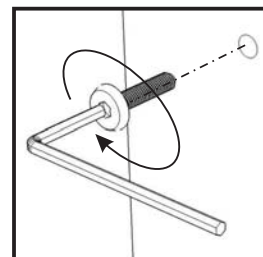
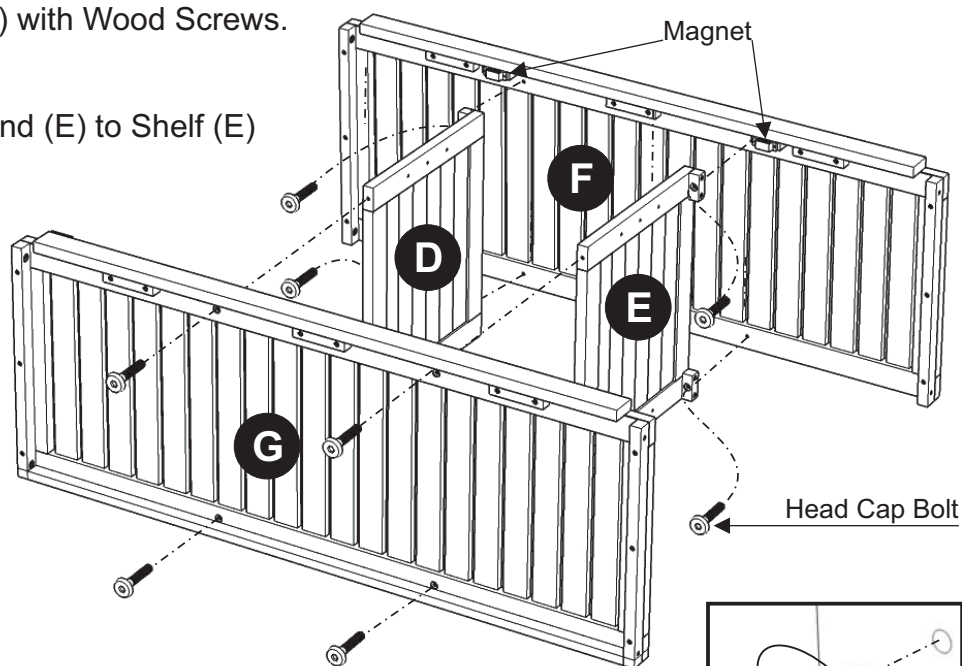
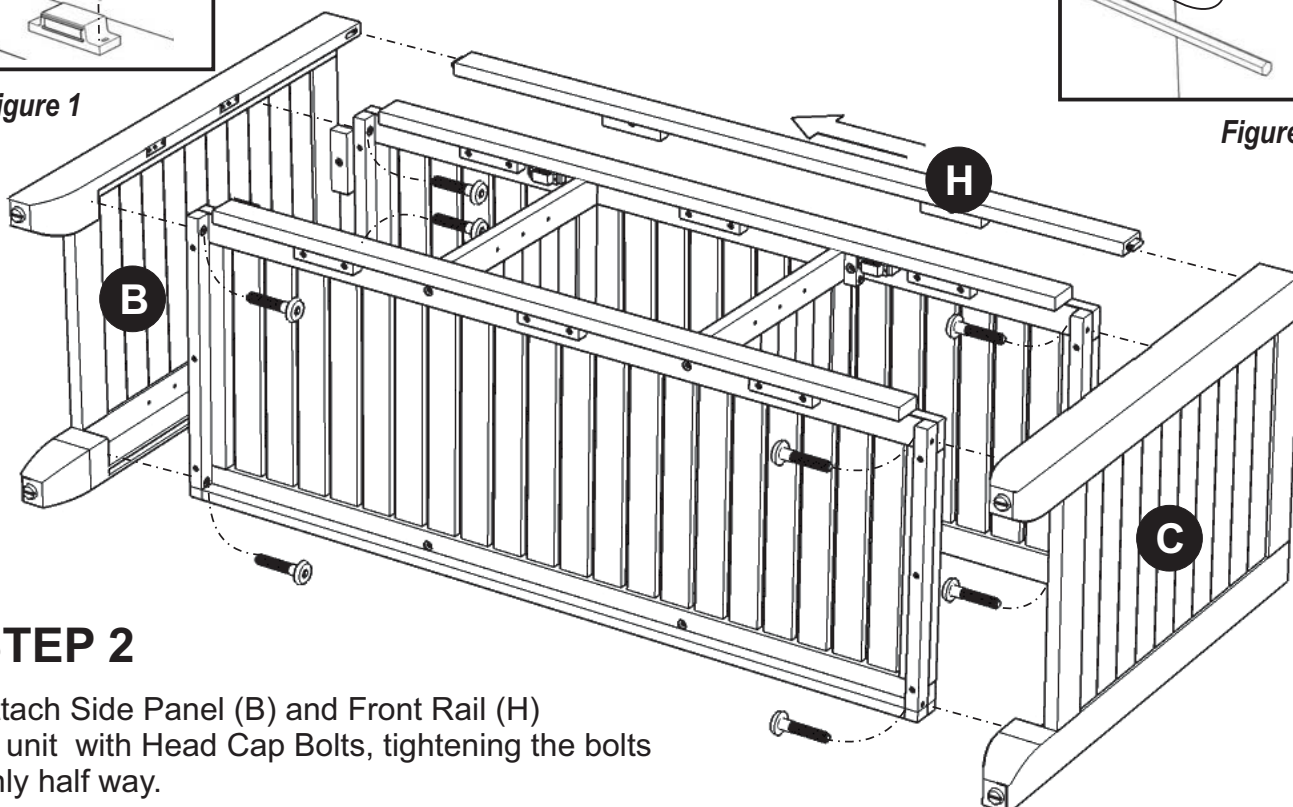


Figure 2



## STEP 2

Attach Side Panel (B) and Front Rail (H) to unit with Head Cap Bolts, tightening the bolts only half way.

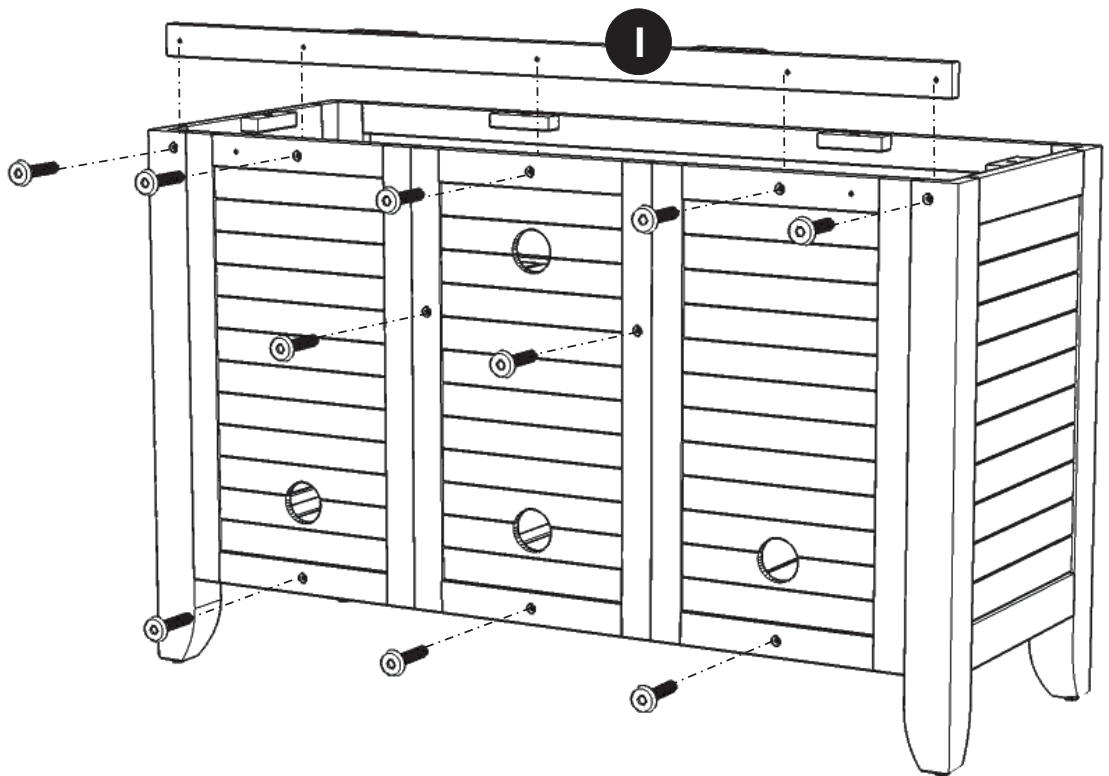
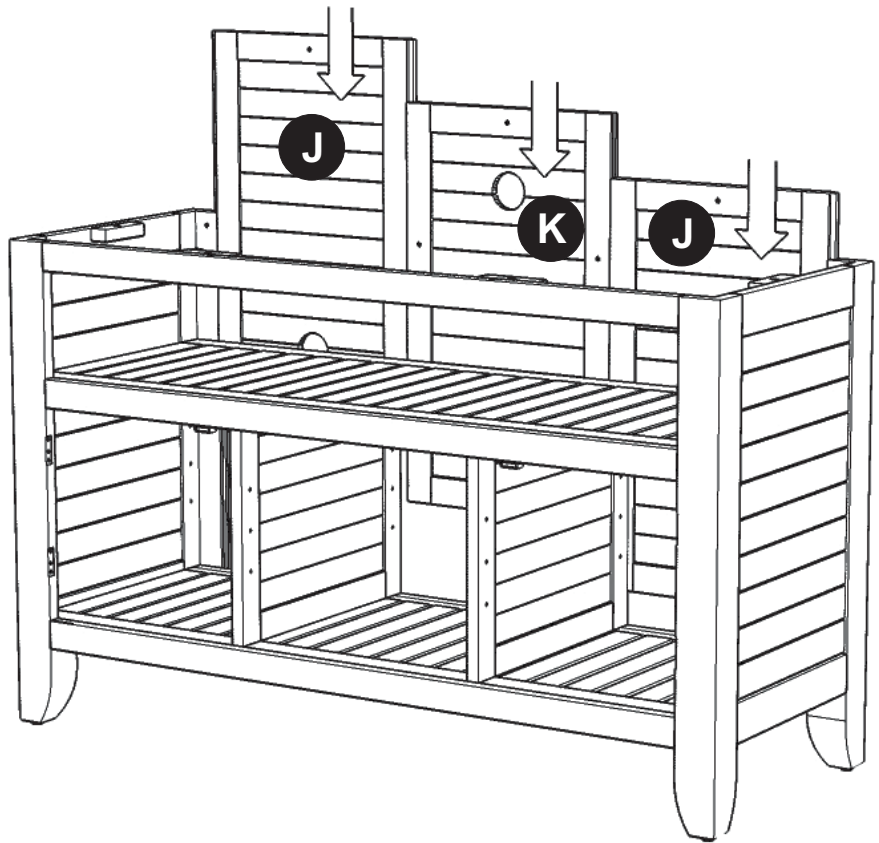
Attach Side Panel (C) to unit with Head Cap Bolts, tightening the bolts only half way.

Tighten all Head Cap Bolts used in Steps 1 and 2.

### STEP 3

Turn unit to its' upright position.

Slide Back Panels (J) and (K) into position.



### STEP 4

Attach Back Stretcher (I) to unit with Head Cap Bolts.

Insert Head Cap Bolts into the pre-drilled holes of back panels.

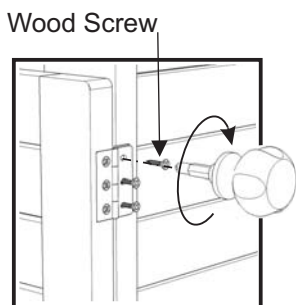
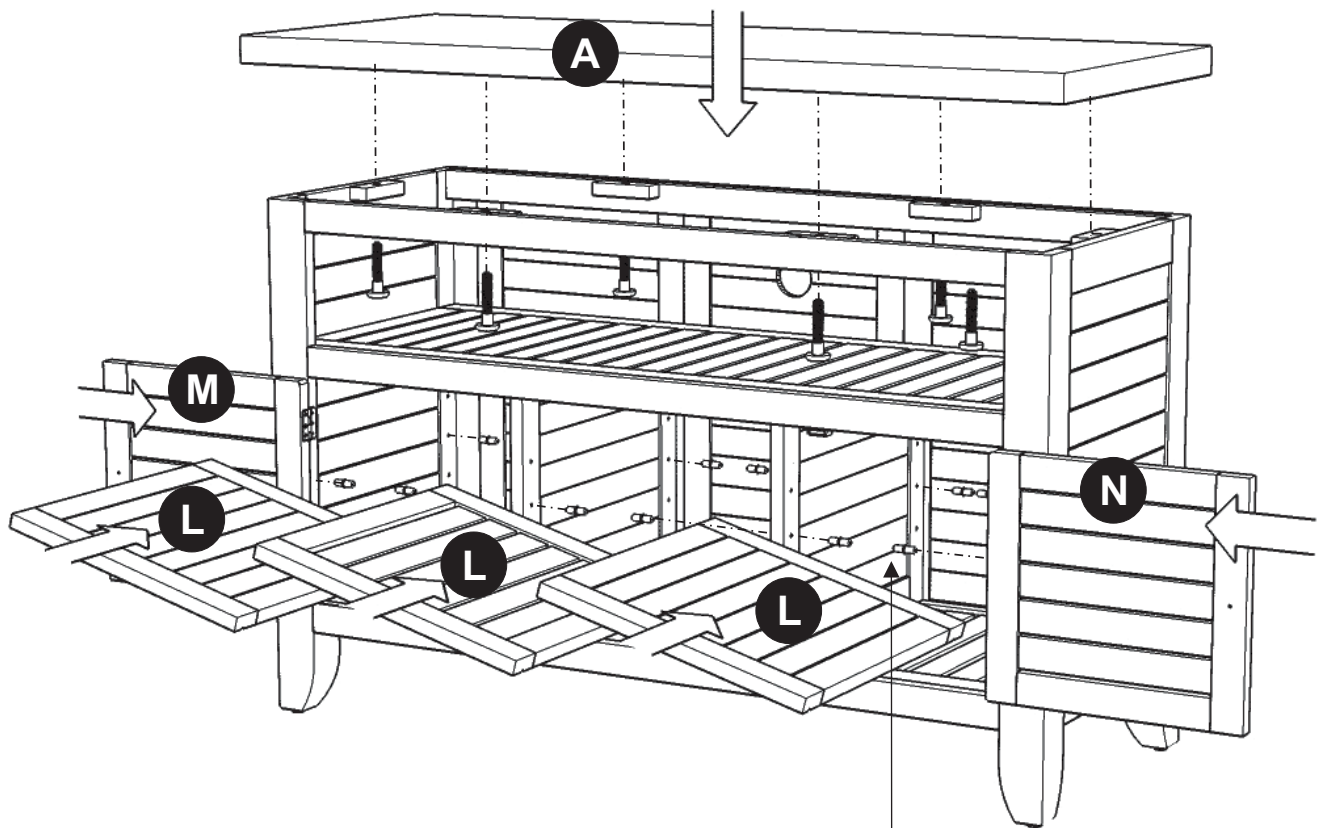


Figure 3

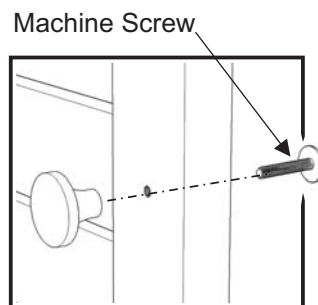


Figure 4

Adjustable Pin

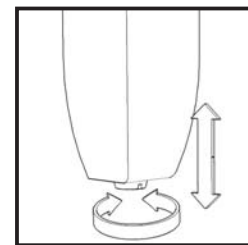


Figure 5

## STEP 5

Attach Top (A) to unit with Head Cap Bolts.

Insert Adjustable Pins into side panels and middle panels at the desired level.

Place Shelves (L) into position.

Attach Doors (M) and (N) to unit with Wood Screws. (See Figure 3)

Assemble Pull Handles to Doors (M) and (N) with Machine Screws. (See Figure 4)

To level the unit, adjust the adjustable levelers on the bottom of legs. (See Figure 5)

**Note : Unit must be level to work properly.**

## Attention!

To help reduce the risk of the unit tipping over, the Tipover Restraint must be installed following these instructions exactly!

Place unit at desired location.

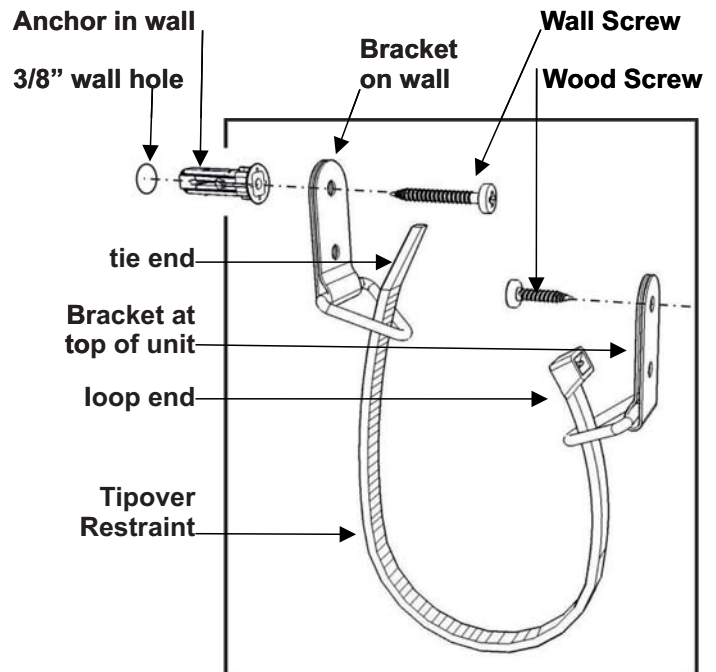
Drill a 3/8" hole in wall at the appropriate location.

Insert Anchor into the wall hole and attach Bracket with Wall Screw.

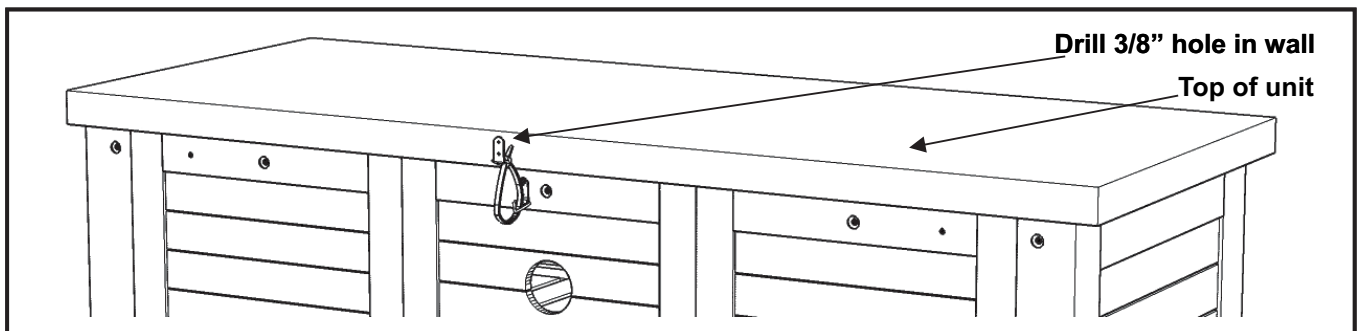
Attach Bracket at pre-drilled hole at top of unit with Wood Screw.

Use Tipover Restraint to secure Bracket on unit to Bracket on wall.  
(See Figure X)

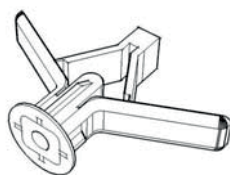
Put tie end of Tipover Restraint into loop end of Tipover Restraint and pull until tight.



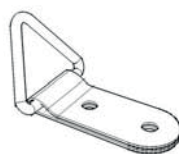
**Figure X**



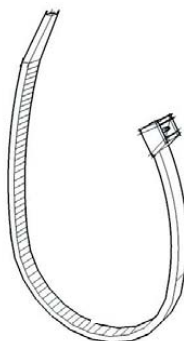
## Hardware List



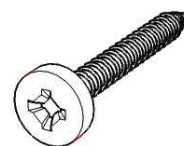
**Anchor**  
1 pc.(+1 extra)



**Bracket**  
2 pcs.(+1 extra)



**Tipover Restraint**  
1 pc.(+1 extra)



**M3.5x40  
Wall Screw**  
1 pc.(+1 extra)



**M3.5x16  
Wood Screw**  
1 pc.(+1 extra)